

# AFFINITY

BRADLEY MALLET  
HANNAH PRATT

A COLLABORATION EXHIBITION FROM TWO  
OLD FRIENDS, SHARING ONE PASSION



NOLIAS GALLERY  
OCTOBER 23- 27 2024

# BRADLEY MALLET

Bradley Mallett is a London based abstract artist. He studied Fine Art Painting at Bath Spa University. It was in his final year that he became fascinated by the colour black and began building on a black canvas as a base. The colour black is a major influence in Mallett's work and acts as a starting point for his paintings.

For Mallett the black canvas screams many more opportunities than the standard white. His work is also very much about mark making, and the act of, and the variety of results of mark making. The way in which these marks coincide and complement each other through the layers is what he finds quite fascinating when exploring each piece. With the inspiration of music and lyrics, his work has grown into further abstract and distorted worlds.

By means of metaphors within each painting and the inclusion of snippets of lyrics, both obvious and sometimes hidden, he invites the viewer deep into the heart of these complex paintings.



**[@bam\\_bradley\\_mallett](#)**

<https://www.bradleymallettart.com/>  
[@bam\\_bradley\\_mallett](#)

# HANNAH PRATT

Hannah Pratt is a UK artist based in London, exploring the relationship between art and science.

Her practice centres around astronomy, space travel, data literacy, and climate change.

Hannah has always drawn inspiration from science, and science fiction, as a way to make sense of the world around her and incorporating science into her practice has opened up a whole new world of possibilities of where her work could go.

Pratt's work encompasses a wide range of mediums, including painting, drawing, textiles, and printing. She also uses various techniques and materials to create her work, depending on the subject matter.

Throughout her career, Pratt has exhibited extensively and participated in various residencies. Notably, she was invited to be Planet Labs artist in residence in 2021 which led to her work being launched into space as part of the Art in Space program. Furthermore, she has been a part of a touring exhibition with CMS at CERN and exhibited at the Royal Society and the Science Museum.

This year she recently completed a large corporate commission with Acylisize Studios in which she created a large body of work for a private client's board room in the city of London.

She collaborates with a diverse array of creative practitioners, including musicians and other visual artists, to create a library of responses to contemporary science.



[@hannahprattartist](https://www.instagram.com/hannahprattartist)

[www.hannahprattartist.com](http://www.hannahprattartist.com)  
[@hannahprattartist](https://www.instagram.com/hannahprattartist)



**Illusive Route**

130/90 cm

Acrylic, Ink, Acrylic Canvas Sealer, Acrylic Glazing Medium on Canvas

£840



**Starlight Threads - Draco and Cygnus**

Embroidery on Archival Print

35/45 cm Framed

£350



**Starlight Threads - Leo and Hydra**

Embroidery on Archival Print

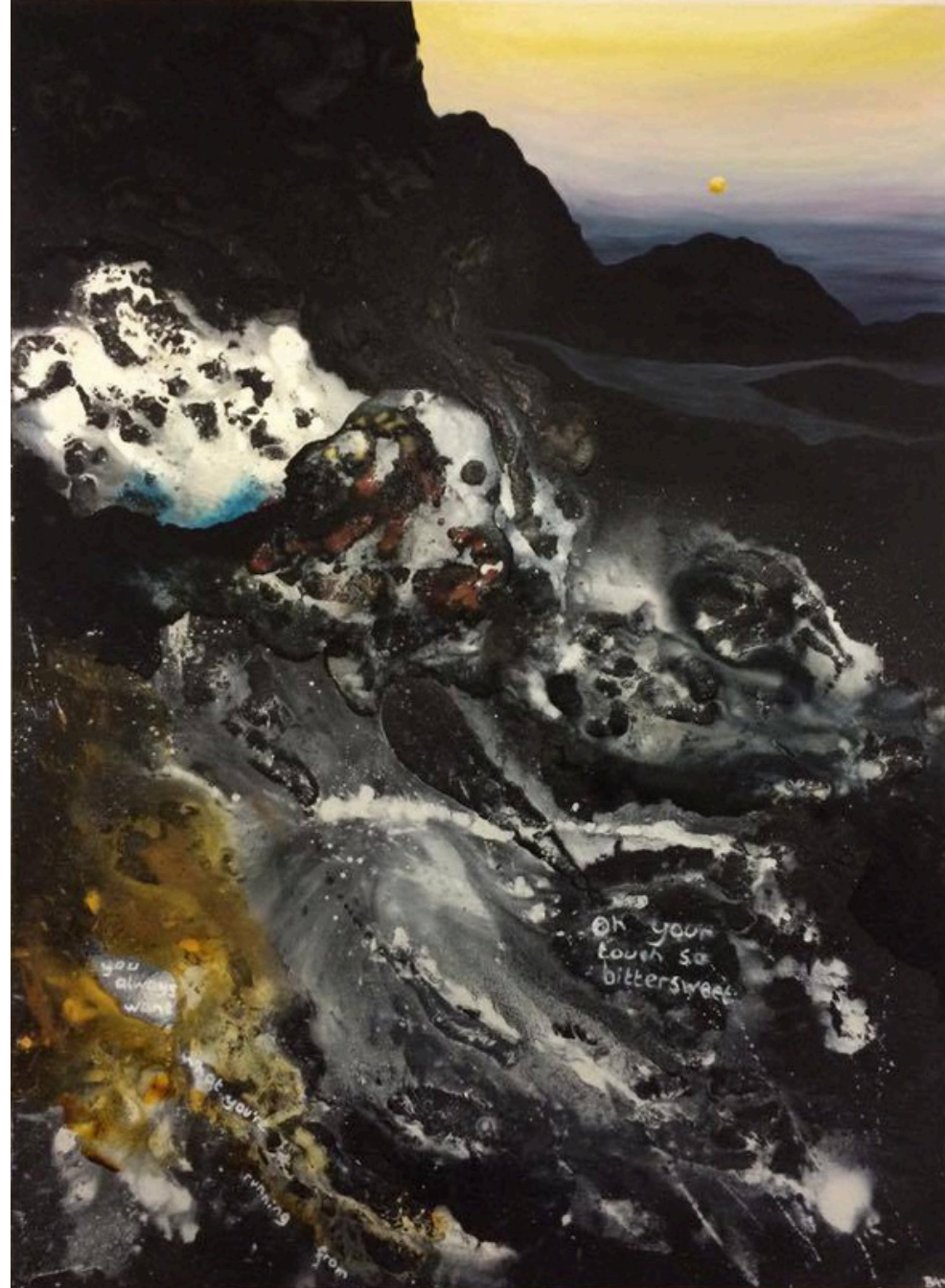
35/45 cm Framed

£350



### What If We Just Fall

Acrylic, Ink, Acrylic Canvas Sealer, Beads, and Sand on  
Canvas  
£1000



### Don't Look Away When The Morning Breaks Us

130/95 cm  
Acrylic, Ink, Acrylic Canvas Sealer, Sand, and Oil on Canvas  
£1400



**Lyra Starlight with Thread**  
Embroidery on Archival Print  
72/104 cm Framed  
£1000



**Elastic Heart**  
90/90 cm  
Acrylic, Ink,  
Acrylic Canvas Sealer, Sand,  
Oil, and Rubber Bands on Canvas  
£900





### Leo Composition

Embroidery on Archival Print

35/45 cm Framed

£400



### Draco Spheres

Embroidery on Archival Print

35/45 cm Framed

£400



**To Have But Not To Hold**

61/91 cm

Acrylic, Ink, Acrylic Canvas Sealer, and Oil on Canvas

£700



### Lyra Arch

Embroidery on Archival Print

35/45 cm Framed

£400



**Or Is It Just Me**

90/75 cm

Acrylic, Ink, Acrylic Canvas Sealer, Beads, and

Sand on canvas

£1150



**Stuck Inside These Walls [part III]**

Acrylic, Ink, Acrylic Canvas Sealer, and Sand on

Canvas

£830



**Offcut Collage No.2**

Paper Collage  
35/45 cm Framed  
£350



**Window to Space no.1**

Paper and Photographic Print Collage  
35/45 cm Framed  
£350



**It's Not Her Fault She  
Doesn't Know Your Face**

91/102 cm  
Acrylic, Ink,  
Acrylic Canvas Sealer,  
Textured Paper, Sand,  
and Oil on Canvas  
£1000



### Hubble Study no.6

12/12cm

High gloss 325gsm Fine Art Baryta with  
Thread

Sold Framed £130



### Orion Study

12/12cm

High gloss 325gsm Fine Art Baryta with  
Thread

Sold Framed £130



### NGC 7293

12/12cm

High gloss 325gsm Fine Art Baryta with  
Thread

Sold Framed £130

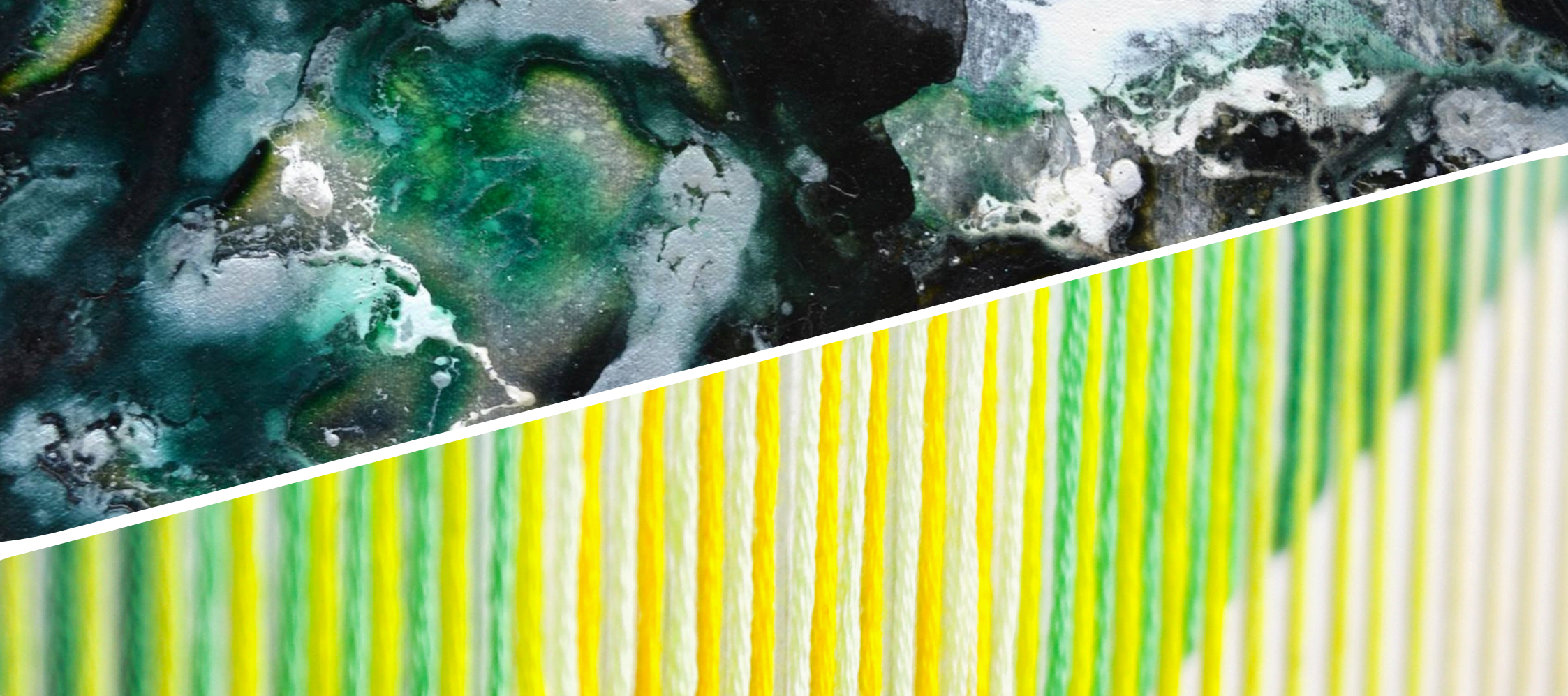


You Make Me Feel

Acrylic, Ink, Acrylic Canvas Sealer, Beads, and Sand on Canvas

£1250





# Contact Us

**Bradley Mallett**

[www.bradleymallettart.com](http://www.bradleymallettart.com)

[@bam\\_bradley\\_mallett /](https://www.instagram.com/bam_bradley_mallett/)

**Hannah Pratt**

[www.hannahprattartist.com](http://www.hannahprattartist.com)

[@hannahprattartist](https://www.instagram.com/hannahprattartist/)

[hannahprattartist@outlook.com](mailto:hannahprattartist@outlook.com)